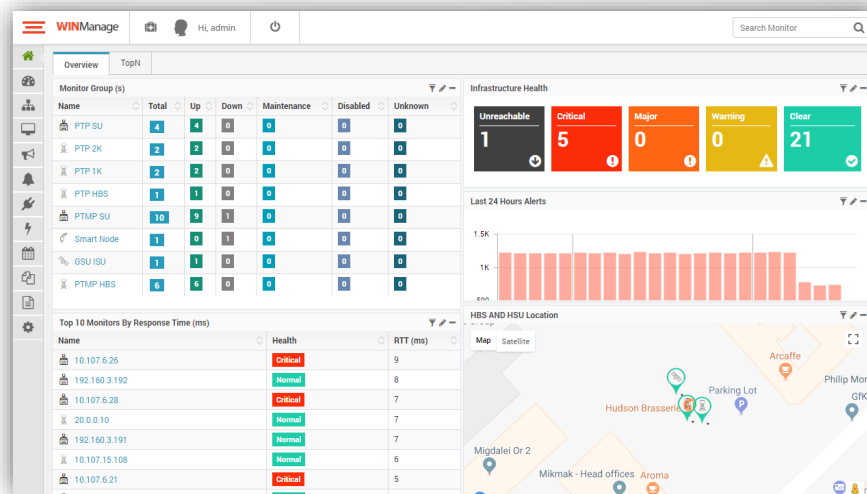


# WINManage Data Sheet

Bronze Package –250 devices

RW 9991—0003



## WINManage Network Management System

WINManage Web Based Network Management System enables network owners to manage RADWIN devices from a single and/or multiple Network Operation Centers (NOC). Using WINManage, users can enhance service levels and reduce downtime while improving operational efficiency and troubleshooting.

Using flexible and customizable dashboards and reports, easily perform network configurations, service provisioning, fault management, performance monitoring and user security management .

### Network Views

Comprehensive network visualization supporting hierarchical views. Zoom in and out to review interdependencies and relationships between RADWIN links and other network devices. Equipment locations can be managed according to regions and sectors.

### Configuration & Provisioning

Multiple RADWIN Manager sessions can be launched via WINManage to support simultaneous configuration and provisioning of several RADWIN devices, links and services.

### Auto Discovery & Auto Provisioning

Automatically discovery RADWIN devices to create network hierarchy maps & dashboard metrics for fast service provisioning.

### Retrieve Device Information

Drill-down to retrieve information such as operational frequencies, software and hardware versions, available services, serial numbers and additional inventory information.

### Fault Detection & Resolution

Instant fault detection and alarm isolation for fast resolution.

### Performance Monitoring & Trend Reports

Complete visibility of network performance to proactively identify and manage potential threats. Monitor equipment availability, ping response time, system health, detailed performance matrixes and pin-point the root cause of open issues. Generate reports and

### Product Highlights

- On premises, web based network monitoring
- Supports all RADWIN products
- Support:
  - Feature rich Fault Management for fast troubleshooting, increased service levels, and reduced downtime
  - Device config. and config. backup
  - Device & interface performance monitoring
  - Multiple user access-level permissions
- Highly flexible & customizable dashboards, reports, widgets, alerts
- 3<sup>rd</sup> party equipment monitoring through SNMP1,2,3 & SSH, ICMP
- Highly scalable architecture to support network growth
- High availability through server redundancy

## PRODUCT SPECIFICATIONS

### Main Features

Web Based GUI	Supported (Web based GUI for monitoring)
Easy setup & Automatic Network Discovery	Supported
RADWIN Device Monitoring	Supported
3rd party Device Monitoring	Supported Protocols: ICMP, SNMP Protocols v1, v2c and Secure SNMP v3
Dedicated dashboards , reports , alerts per devices	Supported
Monitoring Thresholds & Custom Alarms	Supported
Custom alerts action policies	Supported
Comprehensive Dashboard & Report builder (Custom Dashboard/ Reports)	Supported
Table / Chart / Graphical Reports (Performance Monitoring and Trend Reports)	Supported
Scheduled and Export reports	Supported , Format: HTML, PDF, CSV
Pre-defined Reports	Inventory, Executive daily Summary , Availability , Performance, Utilization, Configuration, alerts , Trap , and more ....
Device Software Upgrades & Configuration	Supported (Via RADWIN Manager)
Notification Methods	Supported, (Via Email, Push notifications)
Automation Jobs	Network scan (Auto provisioning), Topology builder, Report emailing , Maintenance , backup
Advance searching	Supported, Searching criteria :Name, IP, Mac, Type, Version Serial, Custom fields, Tag and more
Hierarchical Dashboard / Map Views	Supported, Drill down dashboard, Infrastructure & hashtag map
Geo Location map (Google Map)	Supported
Visual Root Cause Analysis	Supported
User Accounts Management	Supported, Locally & LDAP
User Roles	Unlimited, Screen & Feature level
Detailed log files about all activities and results (Audit logs)	Supported Including filter & smart search options
Concurrent Users	Unlimited (Hardware depended)
No of Manage Devices	Up to 75,000 (Hardware dependent)
No of Remote Poller	20
Distributed Polling Agent Architecture	Supported, scale up & out
High Availability & Redundancy	Supported

### System Requirements

Virtual Appliance	ISO File (Bare Metal, hypervisor , hosted hypervisor)
Min. Hardware Requirements	CPU: 8 Core — 64bit processor Memory: 8GB Disk: 500GB

#### Ordering Info

Part Number: **RW-9991-0003**

Description: **RADWIN WINManage NMS Bronze package, supporting 250 managed devices.**