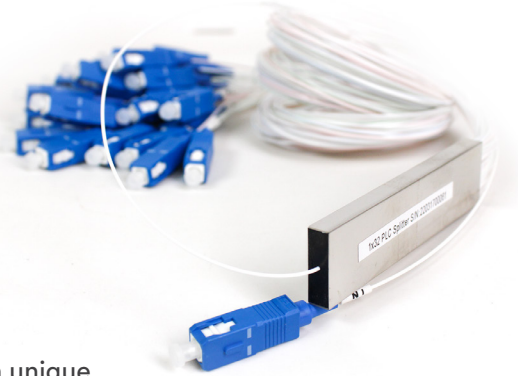




Single-mode Planar Lightwave Circuit Splitter

AC-FIB-SPLIT



Overview

single-mode Planar Lightwave Circuit Splitter (PLC type) are developed based on unique silica glass waveguide process with reliable precision aligned fiber pigtail in a miniature package, it provides a low-cost light distribution solution with small form factor and high reliability.

The PLC type devices have high performance in terms of low insertion loss, low PDL high return loss and excellent uniformity over a wide wavelength range from 1260nm to 1650nm and working in temperature from 1x4, 1x8, 1x16 and 1x32 configurations, as well as customized structures of 2x8, 2x16, 2x32 and 2x64.

Features

- Compact design
- Low insertion loss and low PDL
- High reliability
- High channel counts
- Customized packaging and configuration
- Wide wavelength range
- Large operating temperature range

Application

- FTTx systems
- LAN,WAN and Metro Networks
- CATV Networks
- Analog/Digital Passive Optical Networks
- Other applications in fiber optical systems

Compliance

- Telcordia GR-1209-CORE
- Telcordia GR-1221-CORE

Port Configuration		1X2	1X4	1X8	1X16	1X32
Fiber Type		G.652D, G.657.A1, G.657.A2 or Customer specified				
Operating Wavelength(nm)		1260~1650				
Insertion Loss(dB)	PLC Device	≤3.8	≤7.4	≤10.5	≤13.5	≤16.8
	PLC Plug type	≤4.2	≤7.8	≤10.9	≤13.9	≤17.2
	PLC Adaptor type	≤4.4	≤8.0	≤11.1	≤14.1	≤17.4

Port Configuration		1X2	1X4	1X8	1X16	1X32
Fiber Type		G.652D, G.657.A1, G.657.A2 or Customer specified				
Operating Wavelength(nm)		1260~1650				
Insertion Loss(dB)	PLC Device	≤3.8	≤7.4	≤10.5	≤13.5	≤16.8
	PLC Plug type	≤4.2	≤7.8	≤10.9	≤13.9	≤17.2
	PLC Adaptor type	≤4.4	≤8.0	≤11.1	≤14.1	≤17.4

Number	Specifications	Reference size (mm)
1	1x2	90x20x10
2	1x4	100x80x10
3	1x8	100x80x10
4	1x16	120x80x18
5	1x32	12x80x18