

Cat-5 STP Lan Cable - CCA - 4 Pair



- 100 Ohm, STP LAN cable
- 4 twisted pairs

Cat-5 STP Lan Cable - CCA - 4 Pair

Specifications: 4x2x(1/0.50CCA+ID0.93)+AL Foil+64x0.12mm Braiding(CCA)+Rip wire+O.D5.8mm, Grey PVC

Construction

- **Basic Wires**

Conductor: Copper clad aluminum 0.50mm outer diameter
Insulation: Solid PE, 0.93mm

- **Wall Thickness**

0.5 mm nominal

- **Overall Diameter**

5.8 mm nominal

- **Outer Sheath:**

PVC, grey

- **Printing**

CAT5E STP 4 PAIRS metermarking

Electrical

- **DC Resistance**

Max. 130 Ohm/Km

- **Resistance Unbalance**

5% Max. at 20°C

- **Mutual Capacitance**

56+/-4 pF/m at 1 KHz

- **Capacitance Unbalance**

3300 pF/km Max. at 1 KHz

- **Impedance**

100+/-15 Ohm at 1 to 100 MHz

- **Voltage Rating**
300 Vrms
- **Dielectric Strength**
700 VAC/one minute
- **Velocity of Propagation**
66% nominal
- **Propagation Delay**
5.7 nS/m max @ 1 MHz
5.4 nS/m max @ 10 MHz
5.3 nS/m max @ 100 MHz
- **Propagation Delay Skew**
35 nS/m max @ 1-100 MHz
- **Insulation Resistance**
5 G Ohm*km min

General

- **Installation Temperature**
-5 to 40 °C
- **Operating Temperature**
-20 to 70 °C
- **Bending Radius**
70 mm during installation
50 mm during operation
- **Weight**
28.3 kg/km, nominal



Cable ID: NF CAT5E STP CCA 0

Test Summary: FAIL

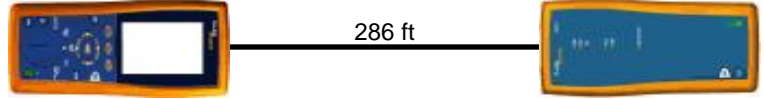
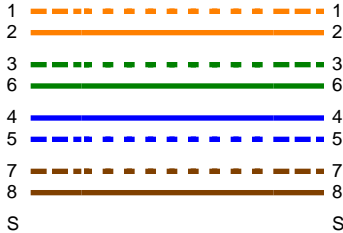
Date / Time: 09/20/2011 08:20:38am
 Headroom: 1.3 dB (NEXT 12-36)
 Test Limit: TIA Cat 5e Channel
 Cable Type: Cat 5e ÜTP

Operator: JX
 Software Version: 2.2200
 Limits Version: 1.3700
 NVP: 69.0%

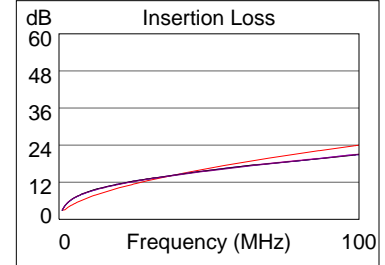
Model: DTX-1800
 Main S/N: 1034027
 Remote S/N: 1034028
 Main Adapter: DTX-CHA001
 Remote Adapter: DTX-CHA001

Wire Map (T568B)

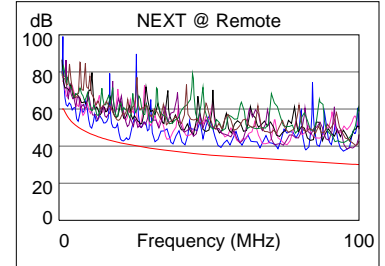
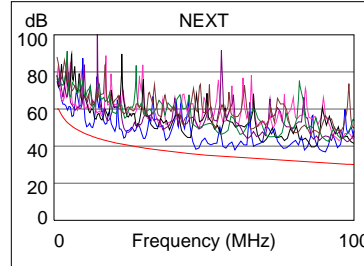
PASS



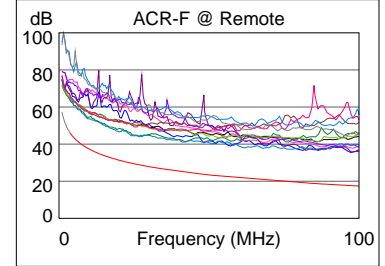
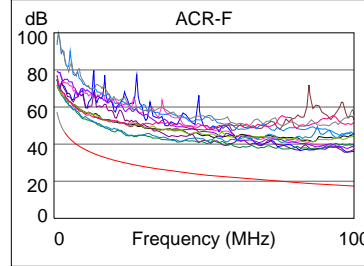
Length (ft), Limit 328	[Pair 45]	286
Prop. Delay (ns), Limit 555		434
Delay Skew (ns), Limit 50		13
Resistance (ohms)	[Pair 12]	25.6
Insertion Loss Margin (dB)	[Pair 12]	-2.0 F
Frequency (MHz)	[Pair 12]	7.5
Limit (dB)	[Pair 12]	6.1



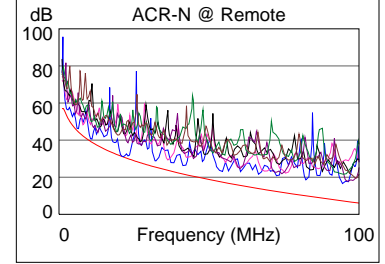
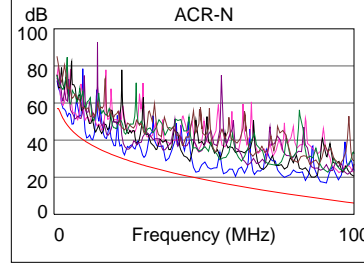
	Worst Case Margin		Worst Case Value	
	MAIN	SR	MAIN	SR
PASS				
Worst Pair	12-36	12-36	12-36	12-36
NEXT (dB)	2.2	1.3	6.1	6.6
Freq. (MHz)	47.8	20.9	90.5	94.5
Limit (dB)	35.6	41.7	30.8	30.5
Worst Pair	36	12	36	36
PS NEXT (dB)	4.8	3.9	7.7	7.1
Freq. (MHz)	47.8	21.6	90.5	96.0
Limit (dB)	32.6	38.4	27.8	27.4



	Worst Case Margin		Worst Case Value	
	MAIN	SR	MAIN	SR
PASS				
Worst Pair	36-45	45-36	12-36	12-36
ACR-F (dB)	14.7	14.7	18.0	17.9
Freq. (MHz)	24.1	24.1	97.8	97.3
Limit (dB)	29.8	29.8	17.6	17.6
Worst Pair	36	36	12	12
PS ACR-F (dB)	17.3	16.3	18.4	19.1
Freq. (MHz)	24.4	24.1	97.0	97.8
Limit (dB)	26.7	26.8	14.7	14.6



	Worst Case Margin		Worst Case Value	
	MAIN	SR	MAIN	SR
N/A				
Worst Pair	12-36	12-36	12-36	12-36
ACR-N (dB)	2.2	0.1	8.7	9.4
Freq. (MHz)	10.9	20.9	90.5	94.5
Limit (dB)	39.0	31.3	8.1	7.2
Worst Pair	36	12	36	36
PS ACR-N (dB)	3.9	2.8	10.3	9.9
Freq. (MHz)	23.4	21.4	90.5	96.0
Limit (dB)	26.8	28.0	5.1	3.9



	Worst Case Margin		Worst Case Value	
	MAIN	SR	MAIN	SR
PASS				
Worst Pair	36	36	36	45
RL (dB)	2.1	1.6	7.8	3.7
Freq. (MHz)	19.4	8.8	96.5	60.0
Limit (dB)	17.0	17.0	10.2	12.2

