

450PL Lifting Best Practice Instruction

REV 1.1 – 21 October '13



Attach lifting cable to winch on the end guy anchor.

Run the lifting cable over the lifting pole as shown.

Guy cables attached to brackets ready for fastening when lift is complete. They can be used for lifting when configured as shown.

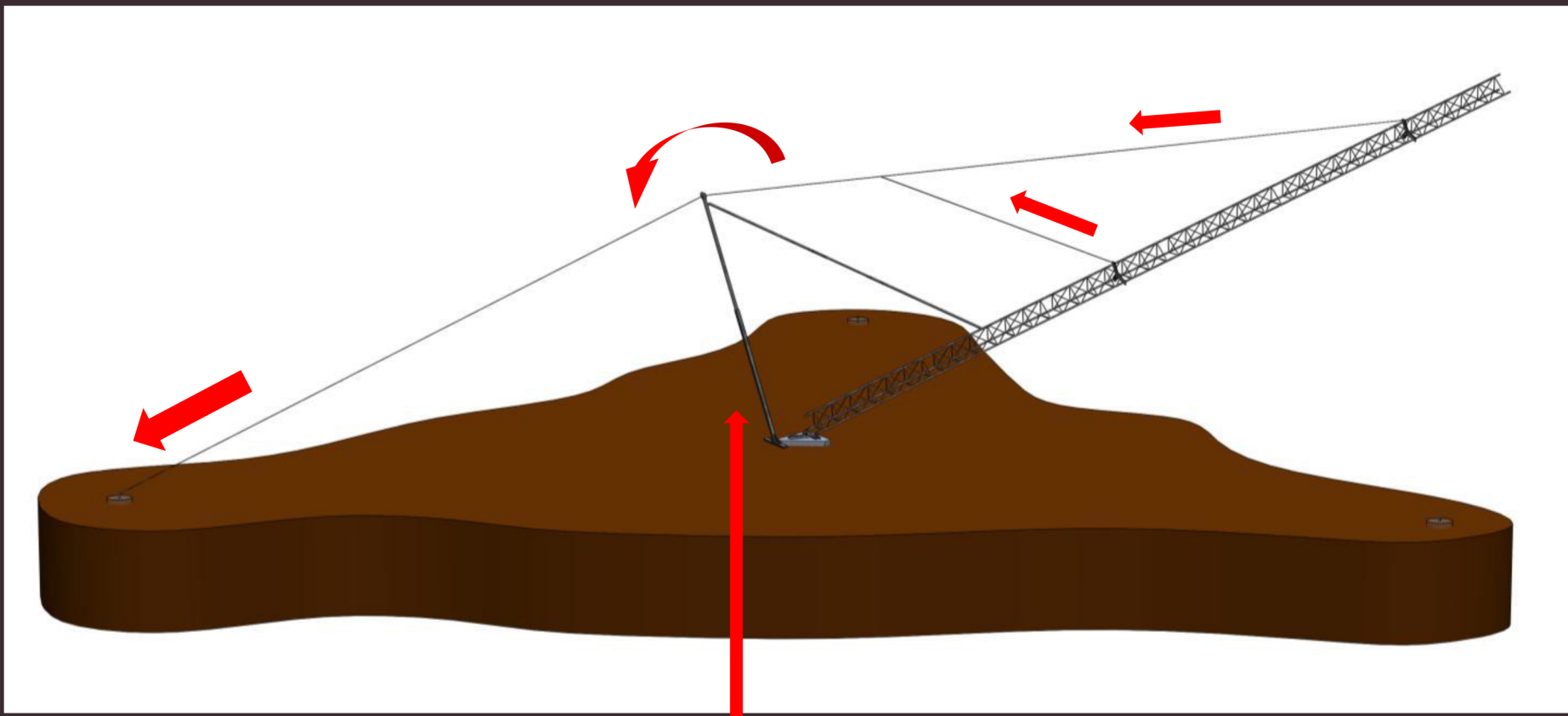
Mast assembled flat on the ground with all bolts fastened and guy brackets in place.

Lifting pole diagonal attached to the tower to force the pole to move with the tower.

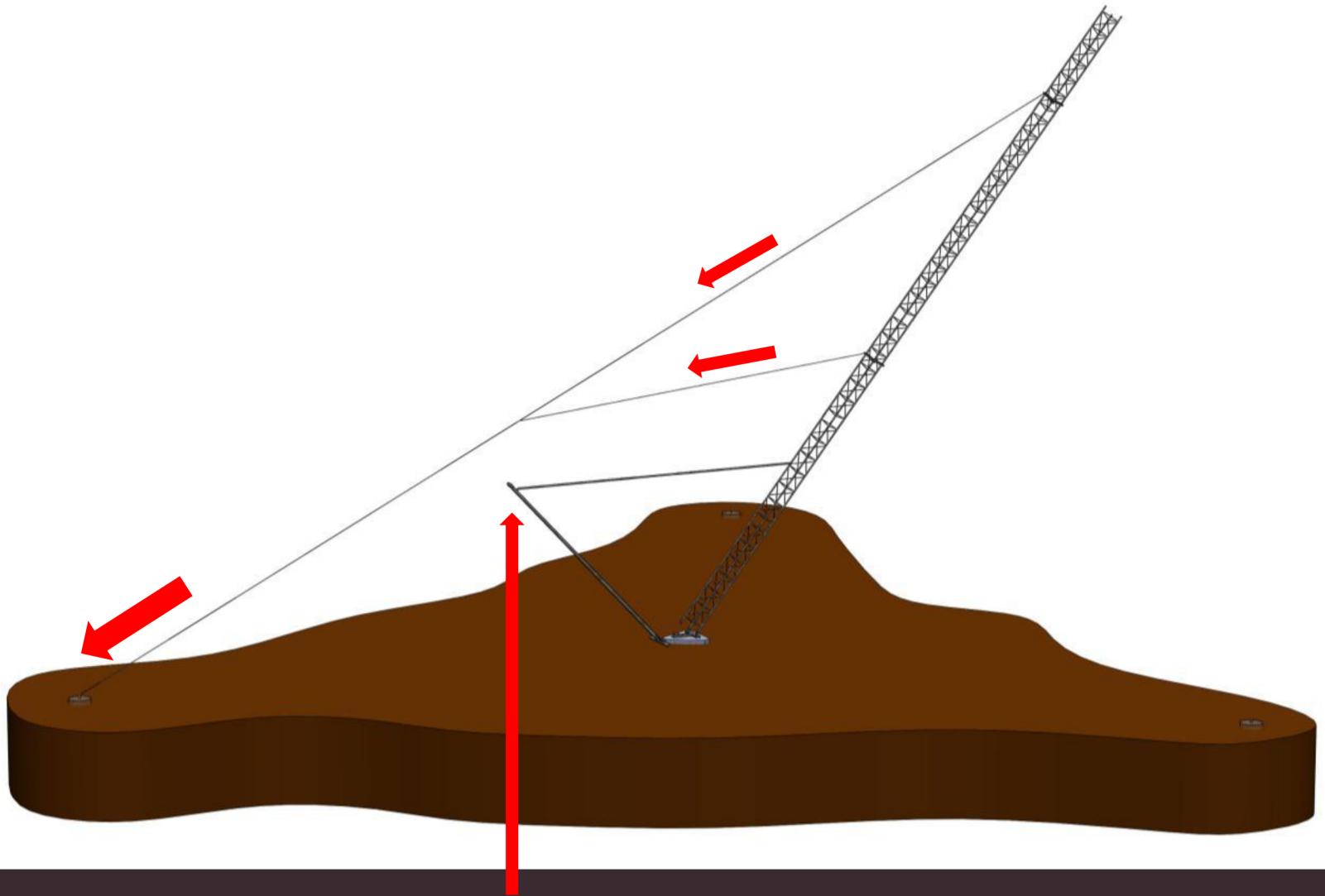
Lifting pole base free from tower. Check t-base is level and adjust using top and bottom fastening nuts.

Lifting cable free to release off the top of the lifting pole.

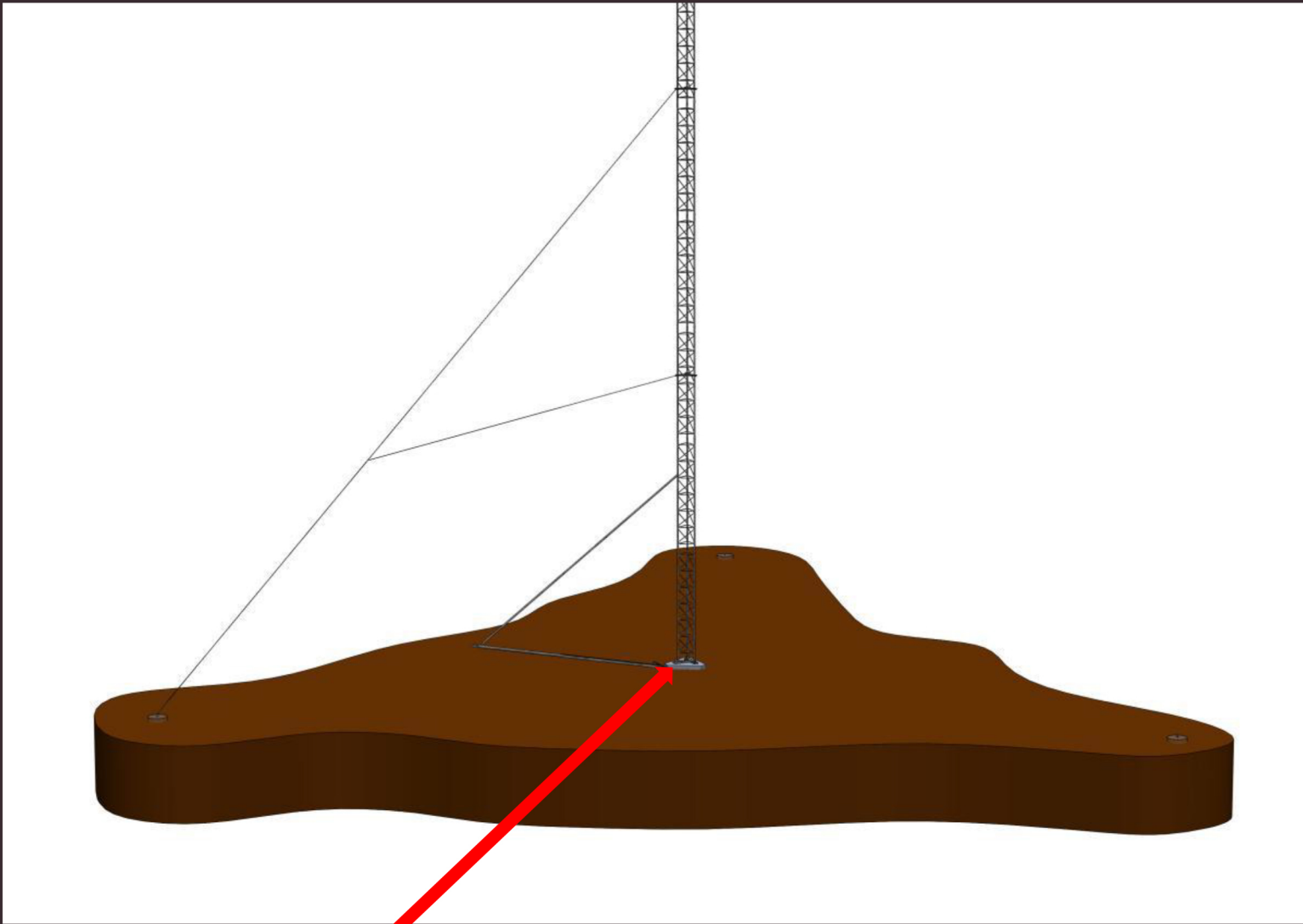
MiRO



Note that the lifting pole moves synchronously with the tower and should remain perpendicular to the tower during the lift.

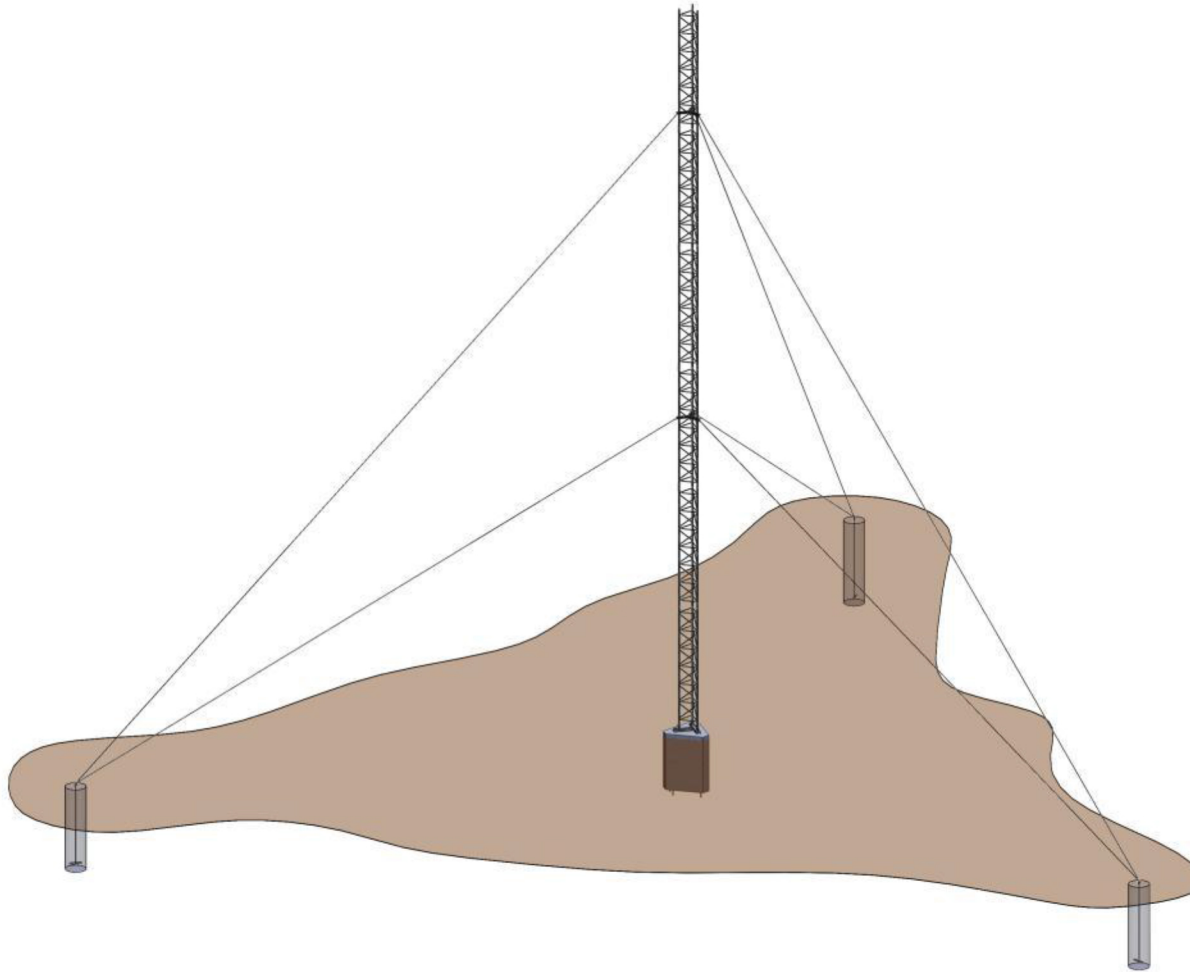


Note that the lifting cable separates from the lifting pole once lever angle is crossed but the lifting pole will continue to move in sync with the tower.



When lift is complete, insert the M16 base hinge bolt and fasten all base bolts securely. Attach the anchor cables to the anchors securely before removing the lifting cable or climbing the tower.





Ensure all guy cables are evenly tensioned. Should the tower be off plumb, the guy cables along with the t-base anchor nuts can be used to straighten the tower but ensure that the guy cables are evenly loaded.