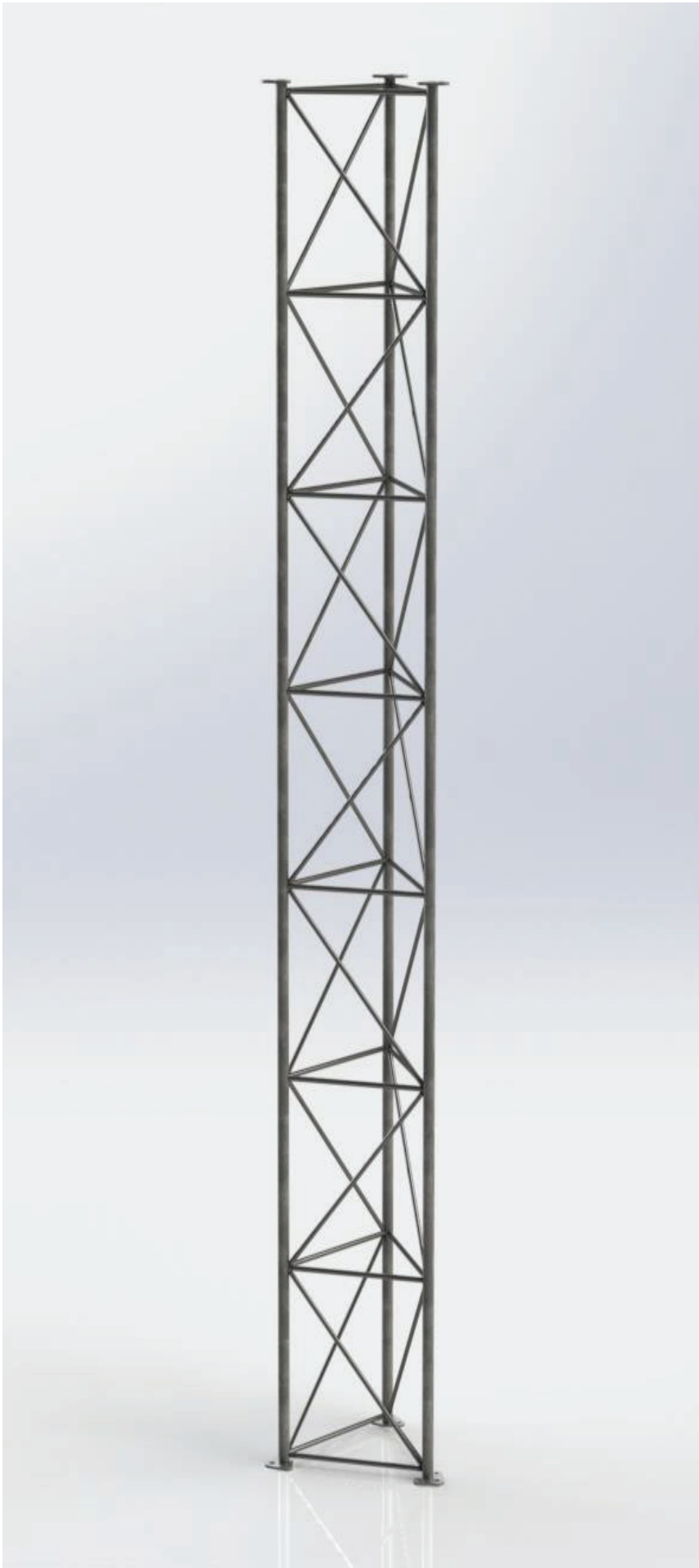


Introduction to Revision 2 Lattice Mast Components



MiRO



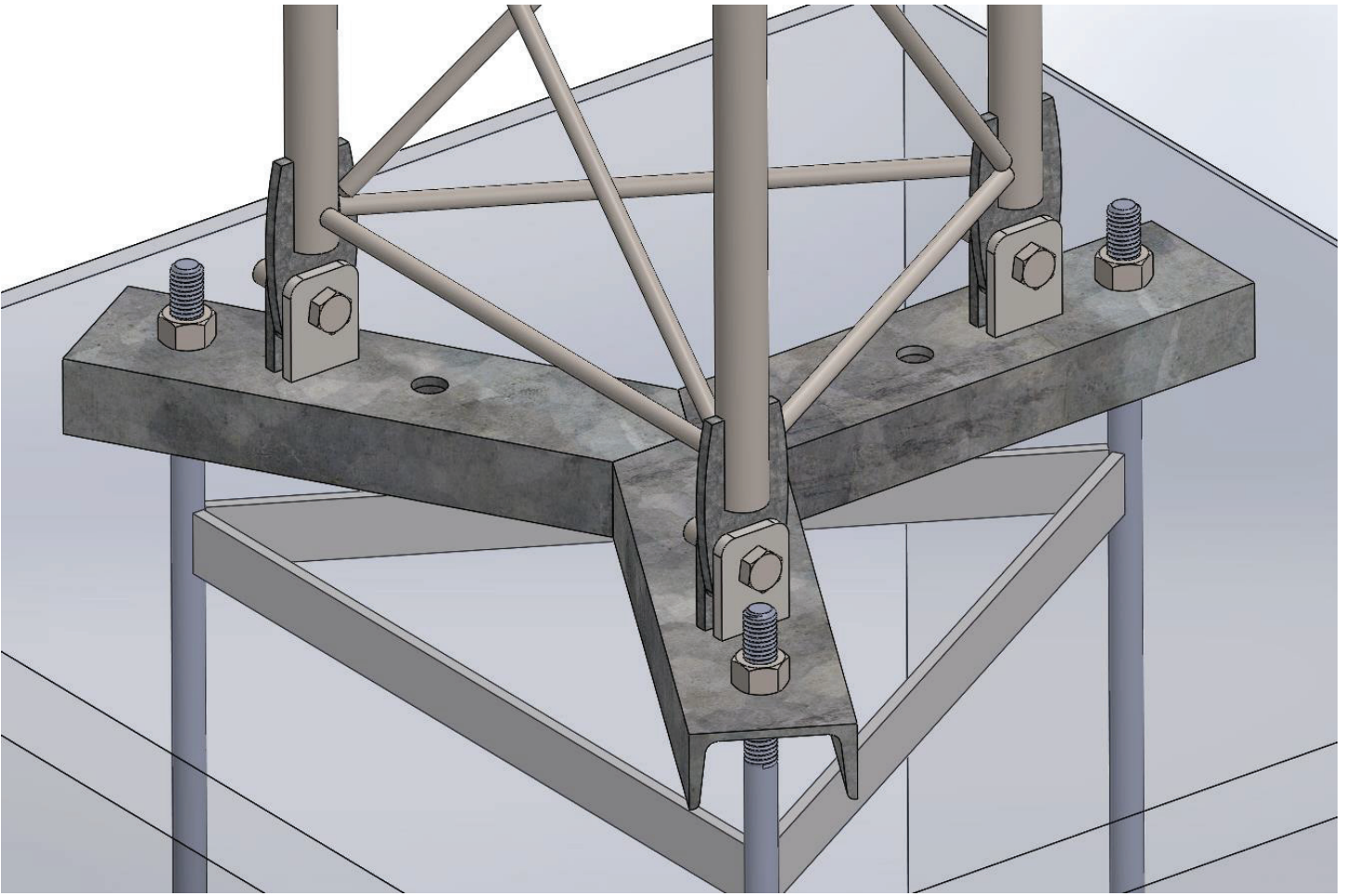
3M Mast Sections MS-HD-SC-V2

Improvements:

We have changed the bracing from Z to K-bracing. K-bracing provides more rigidity and better torsional resistance. We have spaced the horizontals right to prevent any bending of the leg member during transport.

We have changed how the section are fastened together from a sleeve connection to a flanged connection. This is for ease of assembly section to section as the sleeve joint in the previous version was often difficult to align when working at height. The new flange also has the guy anchor point built in.

MiRO

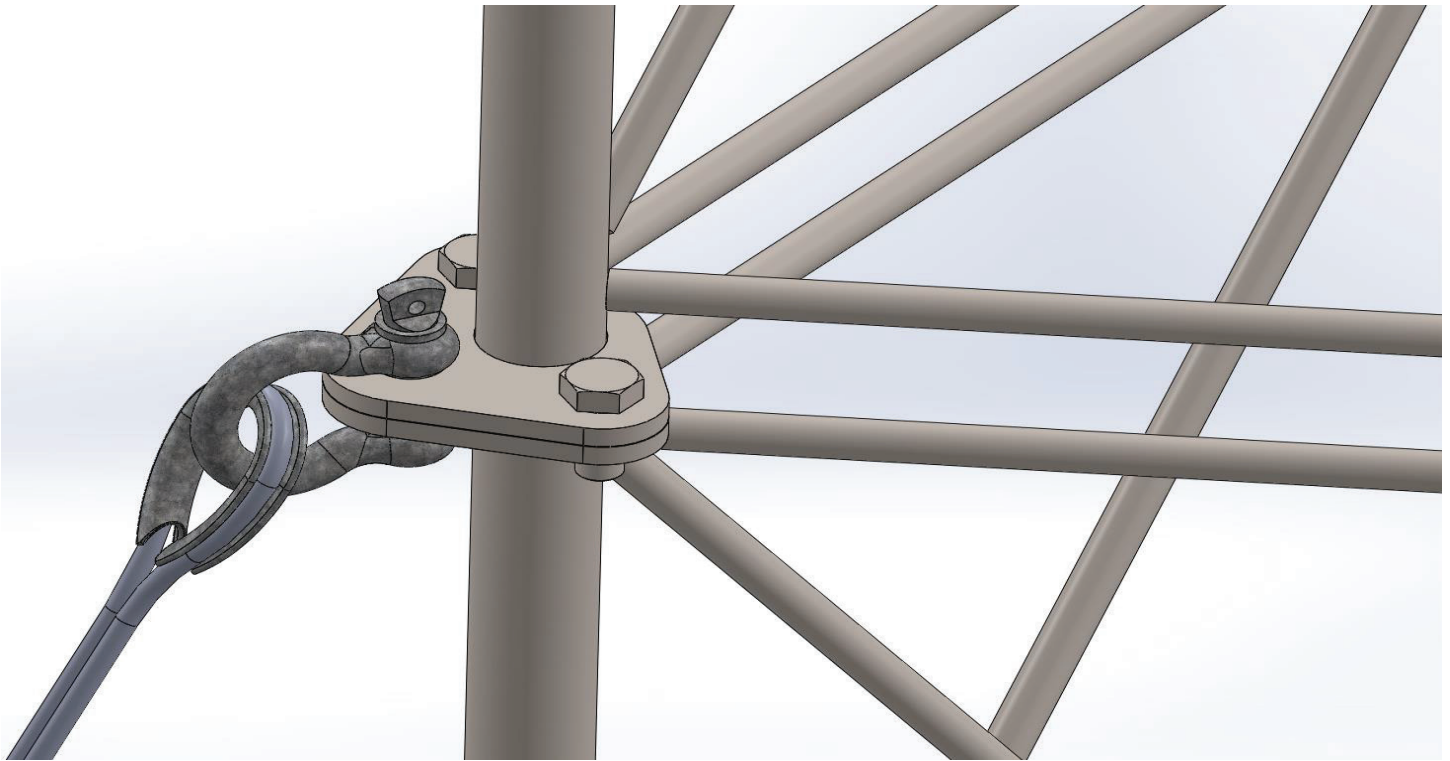


**Lattice Mast Guy Rope (top section)
MS-GR-21-V2**

Improvements:

We have changed the T-base to a Y-base, but have kept the hinged base. The Y-base can be oriented to any hinge direction required as it was with the T-base.

The casting cage is equal sided and no longer needs to be placed in a specific position relative to the Y-base. Because of this, there is less risk of a mistake during installation.



Y-Base Assembly MS-HD-YBA

Flanged joints allow for the guy rope system to be fastened directly to the mast section, eliminating the need for the previously complicated installation of the guy bracket.

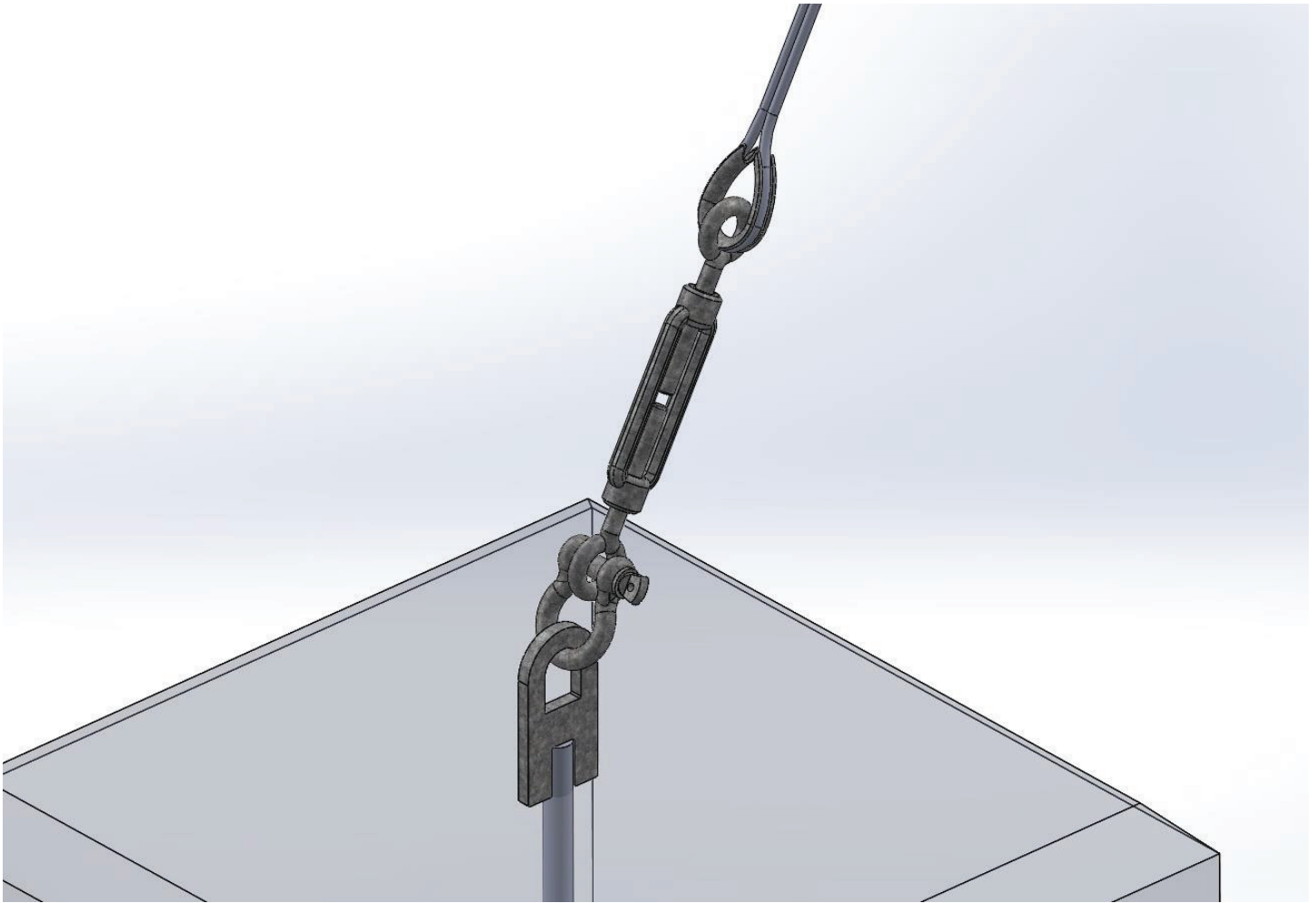
The bow-shackle will be fastened to the outer hole on the flange, to which the thimble with the guy rope and Crosby clamps will be attached.

This makes for easier and faster installation.

Fixeds at 3M intervals.

Less components which makes it more cost-effective.

MiRO



**450PL Guy Anchor Assembly (bottom section)
MS-GR-21-V2**

The Guy anchor remains unchanged. The bow shackle will be fastened to the guy anchor eye. The turnbuckle will be fastened to the bow shackle and the guy cable will be attached to the turnbuckle using the thimble and fastened with two Crosby clamps after pre-tensioning.

MiRO

Mast Adapter MS-MA-V2

The Mast Adapter connects to the mast section itself. It has a sleeve design on one side and flange design on the other. It will therefore slide over the existing mast leg and is bolted on the sleeve with the existing method. The new flange design side can then be connected to the new design mast section using the M12 bolts that the Mast Adapter comes with.



MiRO