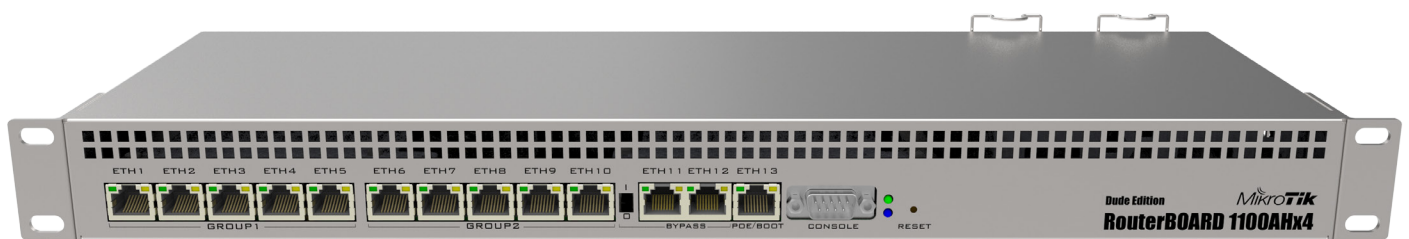


## RB1100AHx4 series

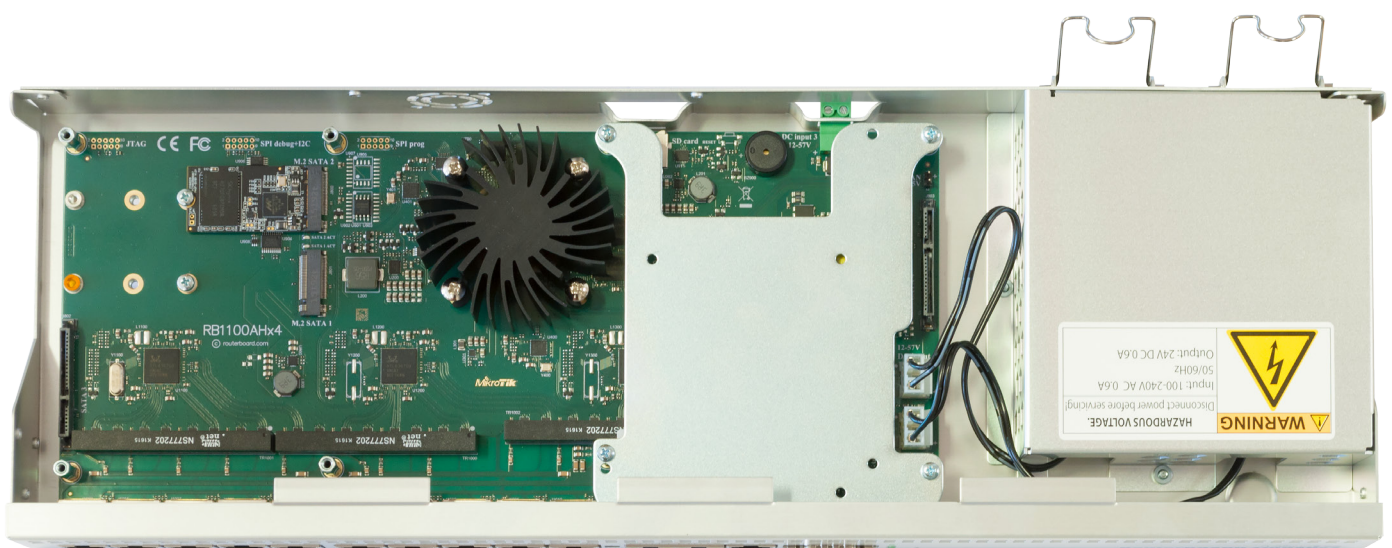
The new RB1100AHx4 series of devices uses a new quad core Cortex A15 chip from Annapurna labs, an Amazon company, The chip is clocked at 1.4 GHz, for a maximum throughput of up to 7.5 Gbit.

Two models are available, with the RB1100AHx4 Dude edition featuring several high speed storage connectors (two SATA and two M.2) for using a Dude database, proxy cache or any other storage intensive feature. The Dude edition includes a 60 GB M.2 drive already installed.



The devices support IPsec hardware acceleration and are faster at it than any previous RouterBOARD device.

The RB1100AHx4 feature two IEC failover power connectors, support 802.3at PoE input and also have a DC telecom power connector for -48 V DC powering.



# Specifications

Product code	RB1100AHx4 Dude edition	RB1100AHx4
CPU	AL21400, 4 cores, 1.4G Hz	AL21400, 4 cores, 1.4 GHz
Size of RAM	1 GB	1 GB
Storage type	NAND	NAND
Storage size	128 MB + 60 GB m.2 SATA 3 drive included	128 MB
10/100/1000 Ethernet ports	13	13
Ethernet bypass	Ethernet 11/12	Ethernet 11/12
Power jack	2x IEC. 100 V - 240 V	2x IEC. 100 V - 240 V
DC telecom power	20 V - 57 V (-48 V supported)	20 V - 57 V (-48 V supported)
PoE input	Passive, 802.3at. 20 V - 57 V	Passive, 802.3at. 20 V - 57 V
Redundant power supply	Yes	Yes
Voltage monitor	Yes	Yes
PCB temperature monitor	Yes	Yes
Current monitor	Yes	Yes
Dimensions	444 x 148 x 47 mm	444 x 148 x 47 mm
Operating system	RouterOS, level 6 license	RouterOS, level 6 license
Max Power consumption	25 W	20 W
microSD	1	1
SATA	2x 2.5 inch SATA 3	-
M.2 slots	2x SATA 3 compatible (supports 2242, 2260 and 2280 sizes, M-key)	-
Serial port	RS232	RS232
Beeper	Yes	Yes

