

ZKBioSecurity

All in One Biometric Security Advanced Solutions



ZKBioSecurity is the ultimate “All in One” web based security platform developed by ZKTeco. It contains multi-ple integrated modules: access control, elevator control(online/offline), hotel module, visitor management, parking, guard patrol and video linkage. With an optimized system architecture designed for high level biometric identification and a modern-user friendly UI, ZKBioSecurity provides the most advanced solution for a whole new user experience.

Features:



Web Based Platform



All-In-One Solution



8000+ Doors Management Capacity



Simple User Friendly UI



Email Notifications



Data Auto-Backup Function



Support 3rd Party Video Device



Global Anti-Passback and Linkage



LPR Camera for Parking



Flexible Card Format



Online Guard Patrol Feature



Time Zone Settings for Exit button and Auxiliary Input



Flexible Verification Mode



Activate or Deactivate the Door



Mobile APP



Hotel Module



Offline Elevator Control

Function

- All-In-One solution. Simple Structure and Smooth Workflow.
- Many Doors Management Capacity (Up to 2,000 doors in Single Server and 8,000 Multi-Server).
- Stable, Fast and Consistent Communication.
- Advanced Access Control Functions.
- Global Anti-Passback and Linkage.
- Video Integration Compatible with Third Party Device.
- Automatic Data Backup.
- Alarms and Events Email Notifications.
- System Log Monitoring System.
- Supports InBio Pro Access Control Panels and Green Label Product Series.
- Card Printing function.
- Supports badge printer, QR code & barcode scanner.
- Supports DNS/DDNS connection.
- Elevator control supports online or offline mode.
- Integrated with Artec Video Software and C2P Video Middleware and connect with Milestone.
- ZKBioSecurity Mobile App.

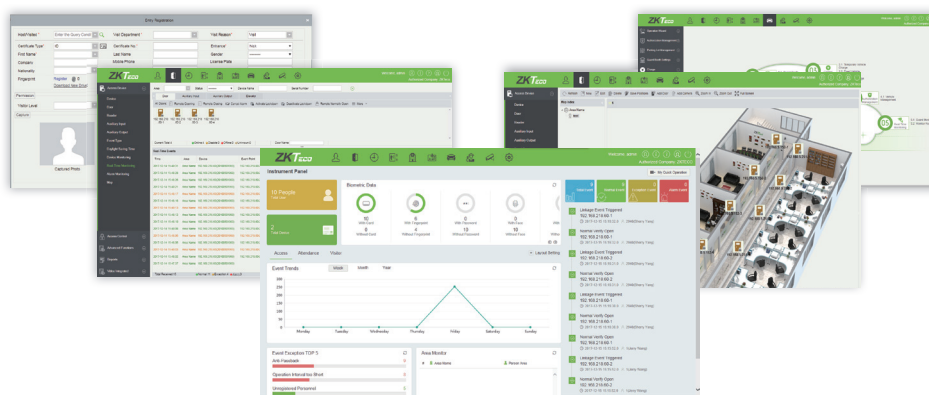
Software Specifications:

Latest Version	3.1.0.0_R
Pervious Version	3.0.5.0_R
System Architecture	Server/Browser
Door Capacity	2,000 Single Server/ 8,000 Multi-Server
User Capacity	30,000*
Database	PostgreSQL (Default), MS SQL Server & Oracle (Optional)
Supported OS	Windows 7/8/8.1/10/Server 2008/2012 (32/64)
Suggested Browsers	IE 11+/Firefox 27+/Chrome 33+

* Minimum PC Requirements:

CPU	Dual core processor with speeds of 2.4GHz or more
Memory	4GB or Above
Storage	30GB Free Space or More. (NTFS Recommended)
Monitor Resolution	1024 x 768 or Above

* Please refer to the server configuration suggestion file according to your requirements.





What's new in v3.1.0.0?

- Newly added Parking module can effectively manage the vehicle's entry and exit using the LPR Camera or UHF or BT readers.
- Newly designed dashboard supports custom settings for different modules and also supports checking event statistics either weekly, monthly or yearly.
- Added newer advanced Access Control features such as Global Anti-Passback support setting by person, exporting report of who is inside and person availability feature and so on.
- Supports Import/Export with custom attributes and Import/Export of Personnel/Department is now more flexible.
- Module menus can also be shown in icon style. It can be customized in the setting.
- Supports OCR and ID Reader in Hotel management module.
- Updated OCR Features now supports more Countries.



ZKTeco Middle East
www.zkteco.me
 E-mail: zk_me@zkteco.com

© Copyright 2016, ZKTECO CO.,LTD. ZKTeco Logo is a registered trademark of ZKTeco or a related company. All other product and company names mentioned are used for identification purposes only and may be the trademarks of their respective owners. All specifications are subject to change without notice. All rights reserved.

V1.3 2018.1.8